

Picnic and Camping Sites in the State Forests of Cyprus



MINISTRY OF AGRICULTURE,
NATURAL RESOURCES
AND ENVIRONMENT
FORESTRY DEPARTMENT



CONTENTS

General..... 5

The Forests of Cyprus..... 5

The Management of Forests..... 5

Picnic and Camping Sites..... 6

Suitability of Use depending on the time of the year..... 7

Rules of conduct of visitors..... 7-8

Table of Picnic Sites..... 9-13

Table of Camping Sites..... 14

Map of Picnic and Camping Sites of Cyprus..... 15

Map 2..... 16

Map 3..... 17

Map 4..... 18

Map 5..... 19

Map 6..... 19



General

This leaflet gives useful information about the picnic and camping sites which are situated in the state forests of the government controlled areas of Cyprus. The object is to help visitors choose the most suitable site depending on where they reside and on their preferences.

The Forests of Cyprus

The forests constitute a valuable part of the natural environment of our island and the dominant element of the Cyprus mountain environment. High forests, that is, those in which trees are dominant, are mainly state forests and are managed by the Forestry Department of the Ministry of Agriculture, Natural Resources and Environment. It is in these forests where picnic and camping sites are usually created.



Our forests are mainly natural forests with an impressive biodiversity and great ecological value. The main forest tree is the Calabrian pine (*Pinus brutia*) from the coast up to 1200-1400 m, while in the higher altitudes of Troodos the dominant species is the black pine (*Pinus nigra* ssp. *pallasiana*). In the main rivers dominant are the oriental plane (*Platanus orientalis*) and oriental alder (*Alnus orientalis*). In small areas there are also other species such as the Cyprus cedar (*Cedrus brevifolia*) and the Mediterranean cypress (*Cupressus sempervirens*). Among the shrubs, in the medium and higher altitudes a common species is the endemic golden oak (*Quercus alnifolia*) which forms compact forests (*latziera*) or is found together with the pine as an under-storey. At low altitudes, prevalent are the maqui forests, the predominant species being apart from the Calabrian pine, the Phoenicean juniper (*Juniperus phoenicea*), the wild olive tree (*Olea europaea*), the carob tree (*Ceratonia siliqua*) and lentisk (*Pistacia lentiscus*).

The Management of Forests

The Cyprus forests, with a strong Mediterranean character have a small productivity in timber. But they are indeed, significant to our country since they offer many other benefits and services of an economic value, infinitely greater than that of timber production. Such benefits are recreation, agrotourism, the protection of biodiversity,

conservation of water resources, soil protection, mitigation of the greenhouse phenomenon, improvement of the landscape and the production of game, aromatic herbs, mushrooms and other products.

Because of these special characteristics, the forests are managed by the Forestry Department for the provision of recreation, protection of nature and other related functions, while timber production is a secondary target of management. Many forest areas have been declared as National Forest Parks and Nature Reserves. Besides, state forests constitute more than 70% of the total area of the NATURA 2000 network of our country, this being a strong evidence of their high ecological value.

The main threat to our forests comes from forest fires which are favored by the long, dry and hot summer. The Forestry Department devotes the greatest part of its annual budgets and personnel to the prevention and fighting of fires. It should be noted that all disastrous forest fires in Cyprus are caused by humans. In the last years a new threat to our forests comes from the over warming of the planet which causes droughts, decrease in vigor and changes to the composition of species or their extinction.

Picnic and Camping Sites

Within the framework of the efforts to improve the opportunities for recreation offered by forests, the Forestry Department has developed, and has been continuously improving, a series of recreation facilities such as picnic and camping sites, nature trails, view points, bicycle paths, visitor centers and botanical gardens. These works are funded from the state budgets and recently from the Rural Development Plan.



The picnic and camping sites, which are the object of the leaflet, started to be created since the 1950's. Today there are 40 picnic and 5 camping sites in the state forests of the government controlled areas of Cyprus.

The picnic sites are created in locations which provide easy access, shade, water, suitable topography and usually an attractive landscape. The facilities which

are offered are: tables, barbecues, drinking water, parking, children playgrounds and sanitary facilities. No entrance fee is required for their use.

Camping sites offer corresponding facilities such as camping places, parking and sanitary facilities, drinking water, tables, barbecues and children playgrounds while in some of them electricity, baths and kitchens are also provided. A small fee is charged for their use. The fee for the Forestry Department's camping sites is specified in the official pricelist of the Department and information may be obtained from the website of the Department www.moa.gov.cy/forest.

Suitability of Use depending on the time of the year

Picnic and camping sites are more suitable to use during a specific period of the year and less suitable during the rest of the year depending on the altitude. Thus, picnic sites at altitudes of over 1300-1400 m (like Pasha Livadhi and Almirolivadho) are more suitable in summer and less suitable in winter, when they are usually snow covered and temperatures are very low. The same applies also to the camping sites of Troodos, Platania and Kampi tou Kalogirou.

The picnic sites in low-altitude areas like that of Athalassa, are suitable throughout the year, except during the very hot days of July and August and the rainy days of winter. The picnic sites situated near the coast are suitable even during the hottest days of summer.



Rules of conduct of visitors

Visitors of picnic and camping sites should comply with certain basic rules of conduct, to ensure that minimum damage is caused to the environment but also the comfort of other visitors. The most important of these rules are the following:

- The lighting of fire is allowed only in barbecues which are provided. At certain picnic sites like those of Asinou and Athalassa, the lighting of fire is prohibited.
- Before you leave the site make sure that the embers have entirely died down even if you have stored them in places which may exist for this purpose.
- The use of wood found in the forest for the lighting of fire and the cooking of food is not allowed. Visitors should bring with them the necessary quantity of coals.

PICNIC AND CAMPING SITES IN THE STATE FORESTS OF CYPRUS



- Keep the place clean. Pick all your garbage and put them in garbage bins or if they are full take the garbage with you. Do not leave it in plastic bags out because it is usually scattered by stray dogs, foxes etc.
- Do not create too much commotion with unnecessary noise, respect the other persons' right to tranquility.
- Cutting plants, carving barks of trees and tampering with birds' nests damage the environment and are prohibited by the forest legislation.
- Park your car at the parking places and not next to the tables.
- Use the water sparingly. Do not waste it.
- Urge other visitors also to observe the basic rules of conduct.
- If you notice a fire, call number 1407 immediately (24 hours, free of charge).



PICNIC SITES

In the State Forests there are 40 picnic sites with a total capacity of about 23000 persons, which are managed by the Forestry Department. They provide all the basic facilities for daily excursions like barbecues, drinking water, tables and latrines. All the sites provide facilities also for persons who use wheelchairs.

No. on the map	Name of site	District	Altitude (m)	Location of site	Maximum capacity in persons
1	Timi	Pafos	20	Timi – Pafos Airport road, 1 km before the Airport in the coastal eucalyptus forest.	800
2	Pykni	Pafos	400	Pegeia – Kathikas road, 3 km from Pegeia and 6 km from Kathikas, in the Pegeia state forest.	500
3	Smigies	Pafos	200	Polis Chrysochous – Neo Chorio – Akamas road, 7 km from Polis and 2 km from Neo Chorio, next to the dirt road leading to Akamas forest.	500
4	Mavralis	Pafos	0	Polis Chrysochous – Agia Marina road, 4 km from Polis, next to the main road on the coast.	450
5	Agios	Pafos Merkourios	300	Polis Chrysochous – Stavros tis Psokas road through Lysos, 20 km from Polis and 4 km from Aftoullina locality, site street to the left, on the forest road leading to Agios Merkourios. There is also access through Argaka and Gialta towards Agios Merkourios.	500

6	Gefyri tou Livadiou	Pafos	500	Pomos – Stavros Psokas, forest road, 12 km from Pomos near the road.	400
7	Kalonomati	Lefkosal	500	Orkondas – Pyrgos Tilitrias road, 25 km from Orkontas or the old Kampos – Potamos Kampou road, 8 km from Kampos village.	200
8	Stavros tis Psokas	Pafos	900	At the Stavros Psokas forest station about 20 km from Lysos or Kannaviou and 26 km from Kykko Monastery.	600
9	Agia	Pafos	600	Panagia – Stavros Psokas forest road, 21 km from Panagia and 10 km from Stavros Psokas.	200
10	Monashilaka	Pafos	640	Panagia – Kykkos road 2 km from Panagia and 40 km from Kykkos Monastery.	600
11	Pera Vasa	Pafos	700	Agios Nikolaos – Tzjelefos bridge road, 9 km from Agios Nikolaos village after Tzielefos bridge and the Arminou dam.	250
12	Komititzi	Lefkosal	620	Forest road from Pedoulas – Kykkos road after the Xistarouda picnic site, 5 km from Xistarouda or 10 km from Kykkos monastery through Milikouri village towards Kaminaria to the right of the road in Plati valley	400
13	Xistarouda	Lefkosal	900	Pedoulas – Kykkos road 9 km from Pedoulas, next to the road.	250
14	Xerargaka (Orkondas)	Lefkosal	600	Astromeritis – Kalopanagiotis road and site road on the left before Orkondas, 25 km from Astromeritis.	650
15	Marathos	Lefkosal	1300	Kakopetria – Prodromos road, 7 km from Kakopetria and 6 km from Prodromos towards Kakopetria through Pinewood, next to the road.	300

16	Prodroμος Dam**	Lemesos	1600	Troodos Square – Prodroμος, 5 km from Troodos Square and site road to the left towards Prodroμος Dam	250
17	Kampi tou Kalogyrou	Lemesos	1300	Platres – Prodroμος road, 4 km from Trooditissa and 3 km from Prodroμος, next to the road.	700
18	Trooditissa Xerokolymbos	Lemesos	1300	Platres – Prodroμος road, 6 km from Platres to the right of the road before Trooditissa Monastery.	700
19	Kampos tou Livadiou	Lemesos	1650	Kakopetria – Troodos road, 8 km from Karvounas and 2 km before Troodos Square and dirt path to the right of the road.	400
20	Armyrolivadon	Lemesos	1600	Kakopetria – Troodos road, 7.5 km from Karvounas and 2.5 km before Troodos square in a site street on the left shortly before Livadi tou Pashia.	2000
21	Livadi tou Pashia	Lemesos	1600	Kakopetria – Troodos road, 7.7 km from Karvounas in a site road on the right of the road, 2.3 km before Troodos square.	1600
22	Platania	Lefkosia	110	Kakopetria – Troodos road, 6 km from Kakopetria towards Troodos, on the right and left of the road, near Platania forest station.	2900
23	Arkolachania (Mesa Potamos)	Lemesos	900	Saittas – Mesa Potamos Monastery forest road, 7 km from Saittas and site road to the left before the Monastery. Also access through P. Platres, K. Amiantos and Moniatits through forest roads.	700

PICNIC AND CAMPING SITES IN THE STATE FORESTS OF CYPRUS

24	Agia Paraskevi	Lemesos	600	Lemesos – Kalo Chorio – Agros road, 3 km from Gerasa crossroad, to the left of the road, 3 km before Kalo Chorio.	750
25	Kakomallitis	Lemesos	900	Louvaras – Kakomallitis road, 6 km south of Louvaras village, next to Kakomallitis forest station.	400
26	Polemida*	Lemesos	160	National Forest Park of Polemidia, 6 km from the centre of Lemesos.	200
27	Kionia	Lefkosia	1340	Kapedes – Macheras Monastery road and 1 km before the Monastery to the left towards Kionia, 6 km from Macheras Monastery and 14 km from Kapedes.	550
28	Profitis Ilias	Lefkosia	700	Lythrodontas – Vavatsinia road through Macheras forest, 8 km from Lythrodontas next to Profitis Ilias Monastery.	150
29	Mantra tou Kampionou	Lefkosia	660	Kapedes – Macheras Monastery road, 5 km from Kapedes on either side of the road.	1600
30	Gefyri tis Panagias	Lefkosia	500	Peristerona Morfou – Platanistasa road, 9 km from Peristerona and Mitsero – Platanistasa road, 6 km from Mitsero, opposite the forest station of Gefyri tis Panagias.	100
31	Xyliatos Dam	Lefkosia	600	Peristerona Morfou – Xyliatos – Lagoudera road, 17 km from Peristerona through Xyliatos and side road to the right of the road beneath Xyliatos dam	750
32	Kapoura	Lefkosia	600	Vyzakia – Kannavia road, 9 km from Vyzakia and site road to the left, next to Kapoura forest station	200

33	Asinou*	Lefkosia	440	Astromeritis – Nikitari – Asinou road, 2km from Nikitari village, next to the road and before the church at Asinou.	150
34	Academy*	Lefkosia	140	6 km from the centre of Lefkosia in the National Forest Park of the Pedagogical Academy.	300
35	Agios Georgios*	Lefkosia	160	7 km from the centre of Lefkosia in the National Forest Park of Athalassa.	350
36	Athalassa	Lefkosia 1	60	8 km from the centre of Lefkosia in the National Forest Park of Athalassa and 500 m from Latsia.	450
37	Kornos	Larnaca	380	Lefkosia – Kornos – Lemesos highway, 2 km after Kornos to the right of the road (Exit 11)	850
38	Rizoelia	Larnaca	100	1 km from Aradippou village, west of the Lefkosia – Larnaca highway, in the Rizoelia National Forest Park.	150
39	Agios Antonios	Ammochos	100	4 km from Sotira village (in Agios Antonios Chapel) and 8 km from the Xylophagou – Agia Napa highway, exit F322.	100
40	Agioi Anargyroi	Ammochos	40	8 km from Agia Napa towards SOMERA station, first side road to the left near the Agioi Anargyroi Chapel in the National Forest Park of Cavo Greco.	100

* No lighting of fire is allowed, only cooked meal.

** There is no drinking water.

CAMPING SITES

In the state forests there are 5 camping sites with a total capacity of 2,400 persons in which camping is allowed with payment of a small fee for overnight stay. The Forestry Department manages three of these camping sites while the other two that are also situated in state forest land, are managed by other agencies. They provide facilities like barbecues, drinking water, tables and latrines.

	Name of site	District	Altitude (m)	Location of site	Maximum	
					tents/ caravans	persons
1.	Polis	Pafos	0	1 km northwest of Polis Chrysochous in the Limni state forest (eucalyptus trees)	200	700
2.	Stavros tis Psokas	Pafos	900	About 20 km from Lysos or Kannaviou, near Stavros tis Psokas forest station	60	150
3.	Kampi tou Kalogyrou*	Lemesos	1540	Platres – Prodromos road, 4 km from Trooditissa and 3 km from Prodromos next to the road	80	300
4.	Platania*	Lefkosalia	1100	Kakopetria Troodos road, 5 km from Kakopetria left to the road, before Platania forest station	150	600
5.	Troodos**	Lemesos	1600	Karvounas – Troodos road, 1 km before Troodos square, left of the road	170	650

* Managed by the Forest Department

** Situated within state forest land and managed by other agencies

PICNIC SITES

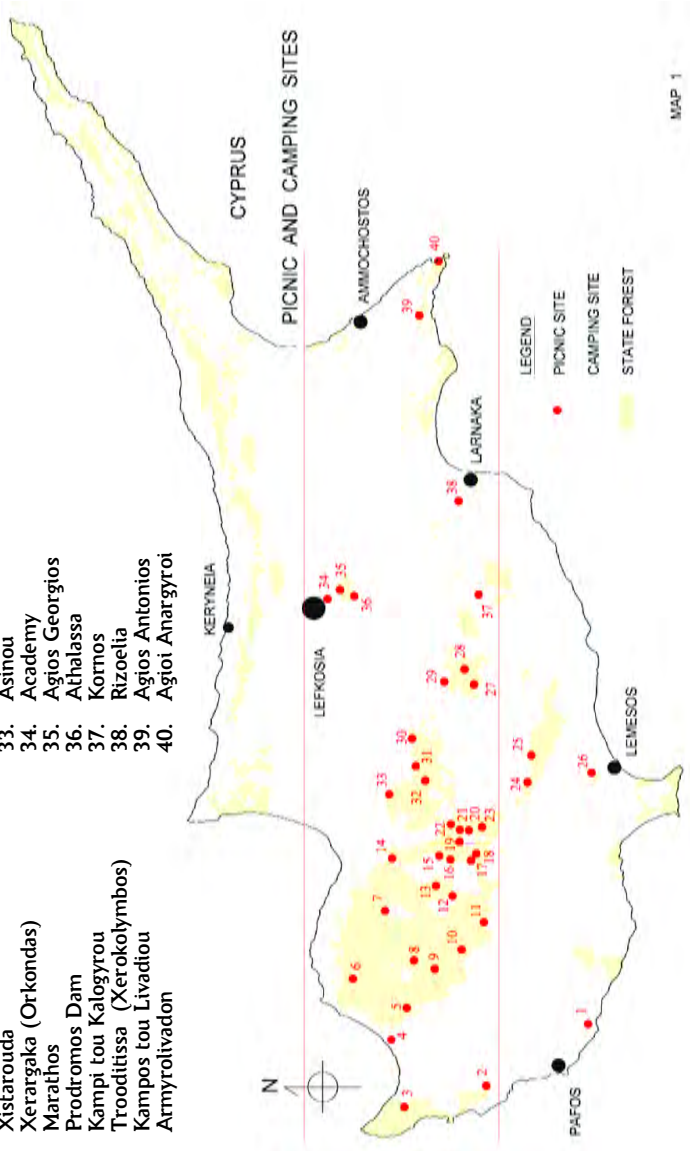


1. Timi
2. Pykni
3. Smigies
4. Mavralis
5. Aġios Merkourios
6. Gefyri tou Livadiou
7. Kalonomati
8. Stavros tis Psokas
9. Aġia
10. Monashilaka
11. Pera Vasa
12. Komittitzi
13. Xistarouida
14. Xeragaka (Orkondas)
15. Marathos
16. Prodromos Dam
17. Kampi tou Kalogyrou
18. Trooditissa (Xerokolymbos)
19. Kampos tou Livadiou
20. Armyrolitivadon

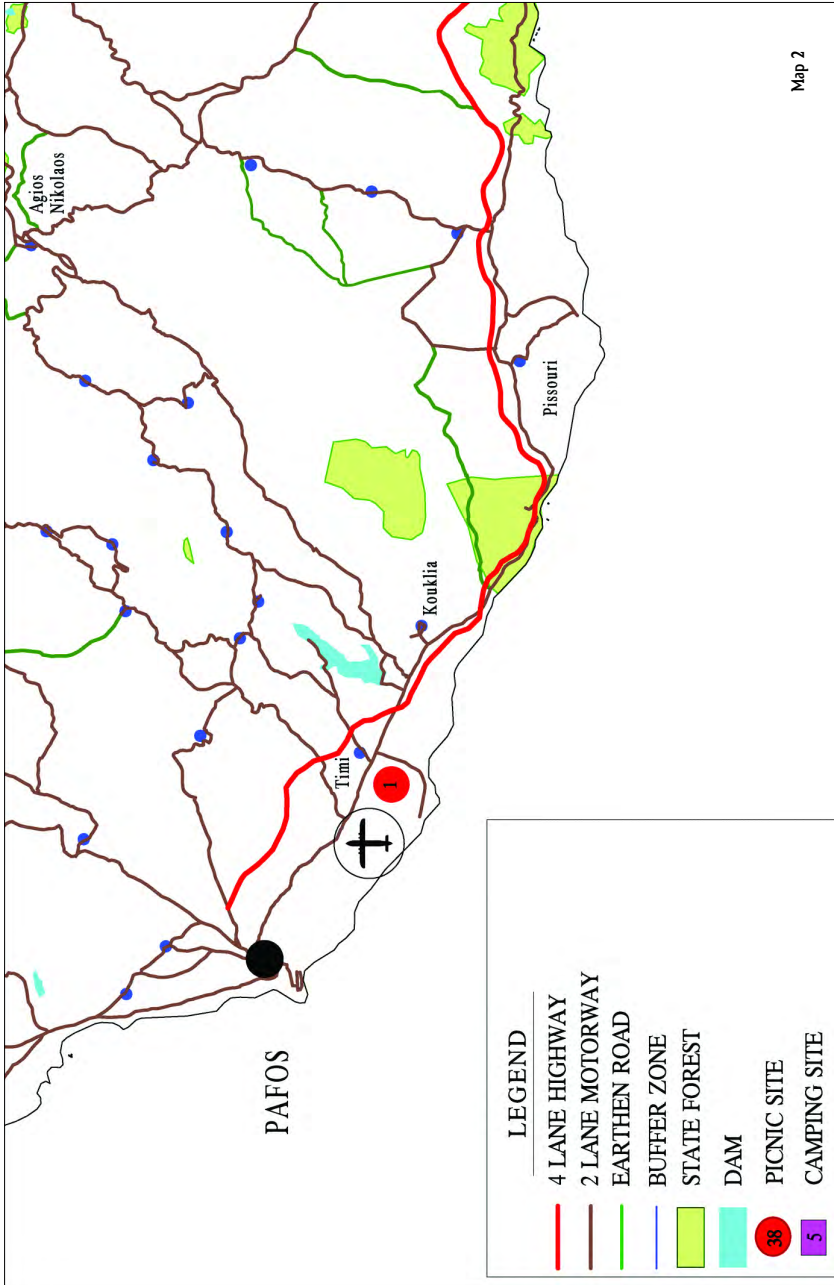
CAMPING SITES



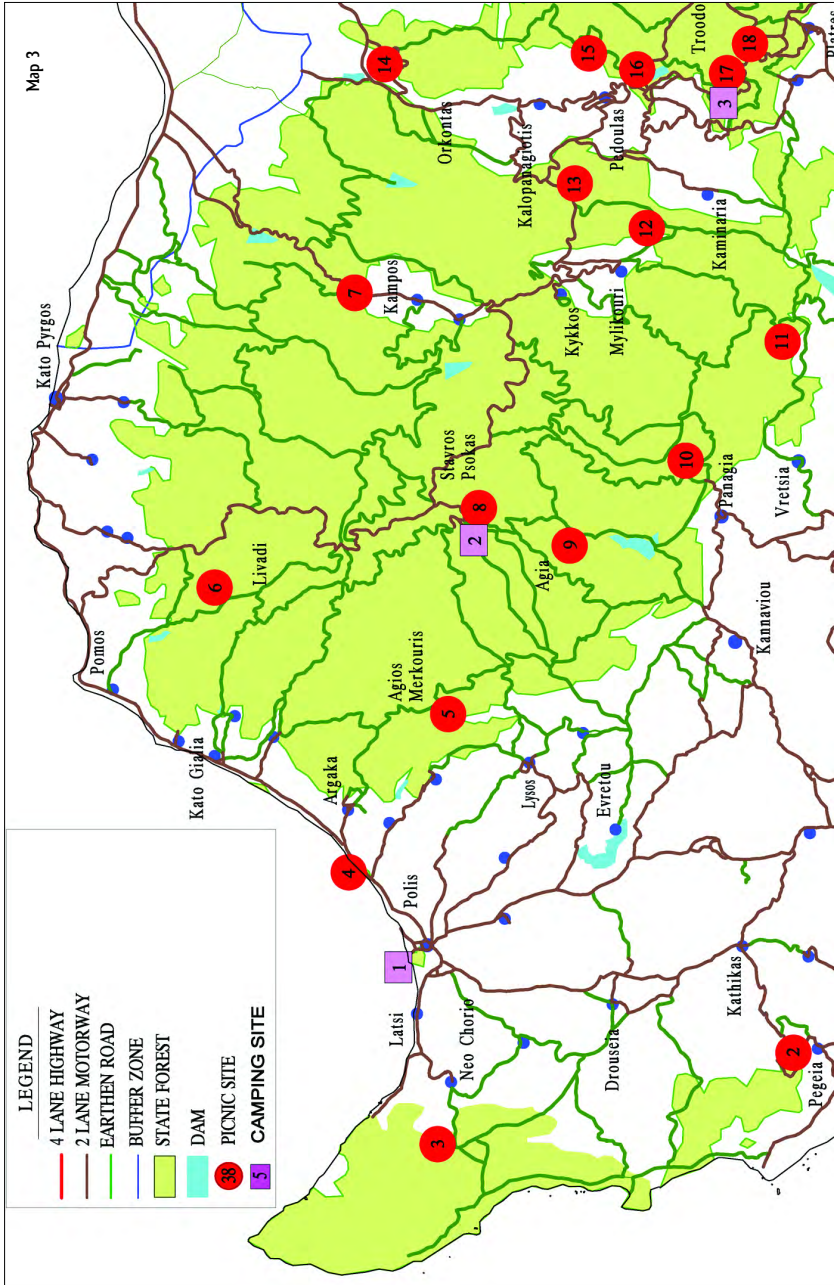
1. Polis Chrysochous
2. Stavros tis Psokas
3. Kampi tou Kalogyrou (Prodromos)
4. Troodos
5. Platania
21. Livadi tou Pashia
22. Platania
23. Arkolachania (Mesa Potamos)
24. Aġia Paraskevi
25. Kakomalitis
26. Polemidia
27. Kionia
28. Profitis Ilias
29. Mantra tou Kampiou
30. Gefyri tis Panagias
31. Xyliatos Dam
32. Kapoura
33. Asinou
34. Academy
35. Aġios Georgios
36. Athalassa
37. Kornos
38. Rizoelia
39. Aġios Antonios
40. Aġiot Anargyroi

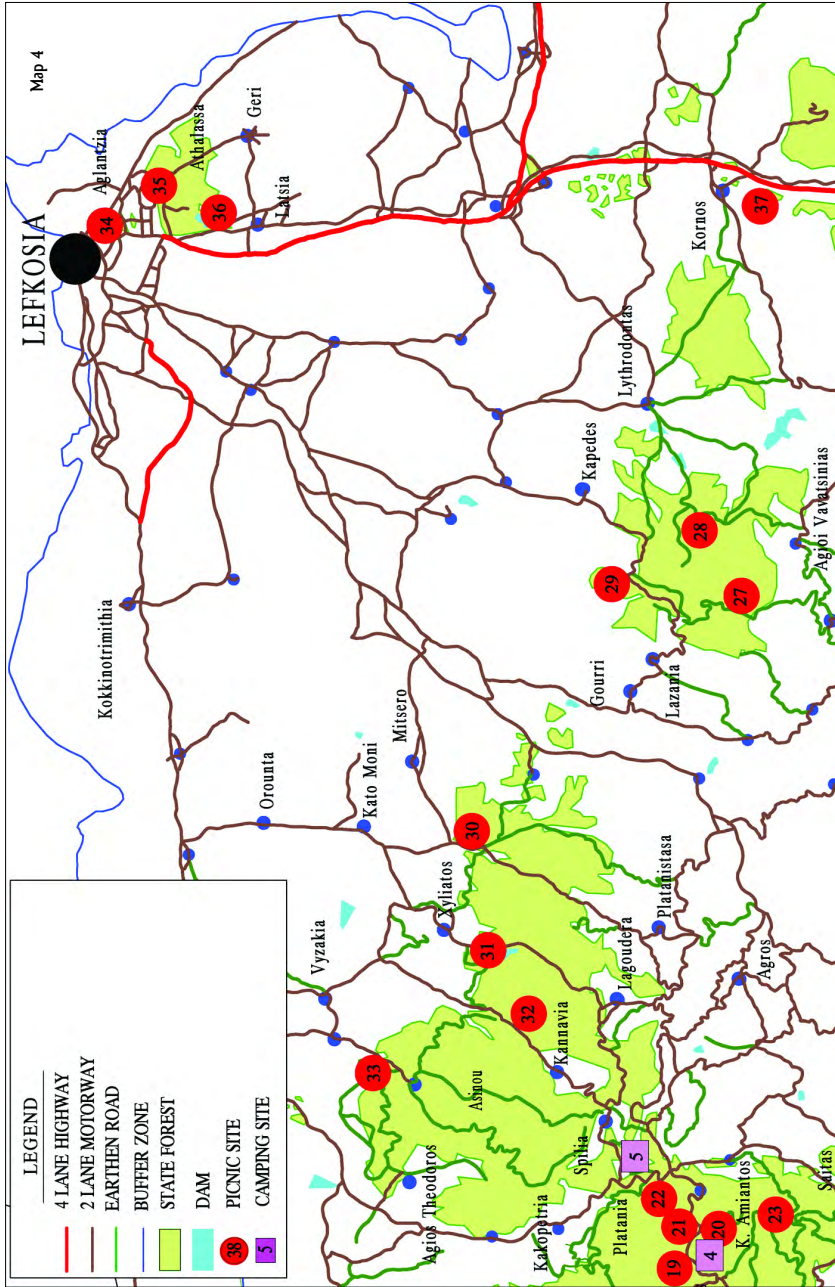


MAP 1

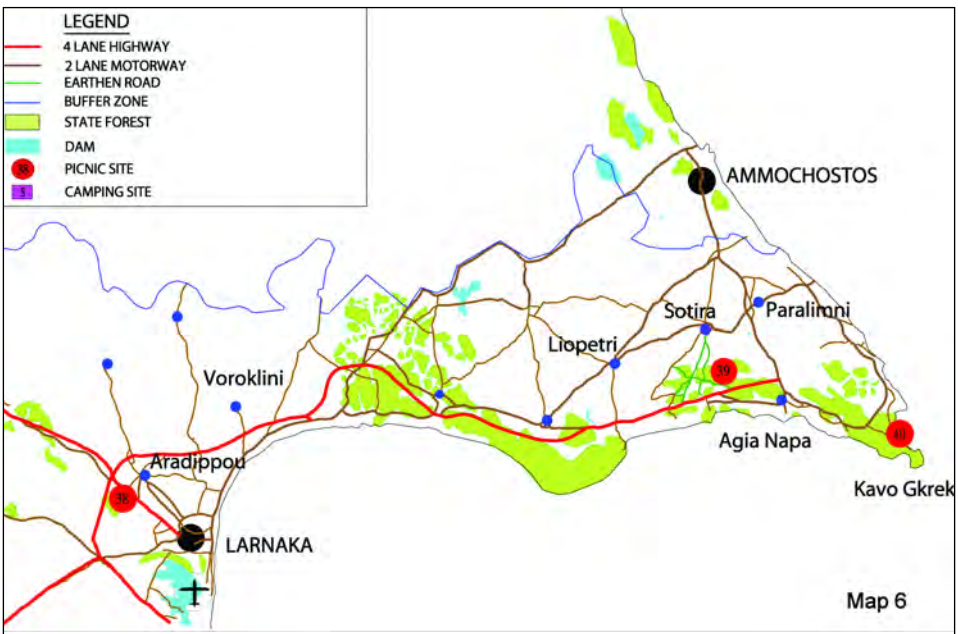
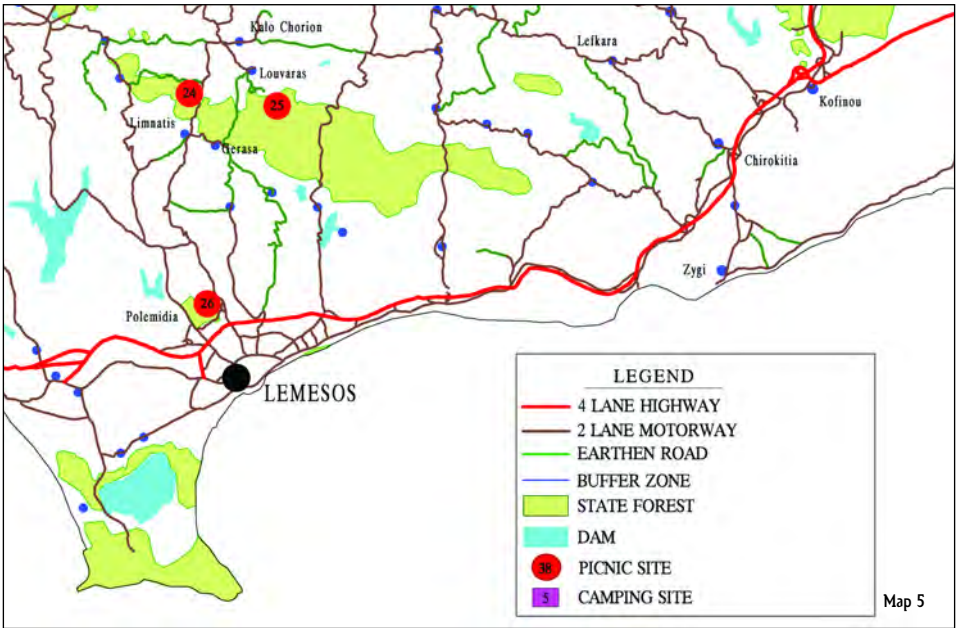


PICNIC AND CAMPING SITES IN THE STATE FORESTS OF CYPRUS





PICNIC AND CAMPING SITES IN THE STATE FORESTS OF CYPRUS





P.I.O. 221/2005-3.000 ISBN 9963-38-994-5
Published by the Press and Information Office

Printed: Theopress Ltd